

Sylvia Plotkin Judaica Museum
(602) 951-0323 ext. 146

Hours: Tuesday, Wednesday,
Thursday...10 a.m.-3 p.m
After Friday evening services
Occasional Sundays, call first

Closed all National and Jewish Holidays

A special thank you to artist Max Gimpel for his talent and devotion to the Sylvia Plotkin Judaica Museum. We are especially grateful for the time he has given to enhance the HaOr's logo and masthead, both of which he originally designed.



HaOR

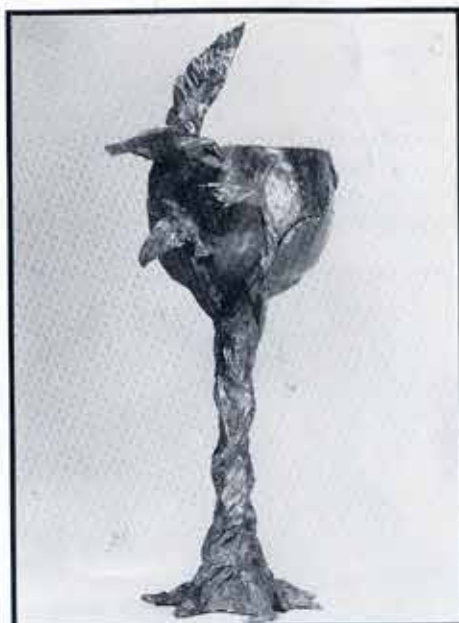
The LIGHT

Fall 1998

...and leave it as an inheritance to your children forever." Ezra 9:1

Coming in January... Grand Reopening of the Permanent Collection Display

Our permanent collection of artifacts, depicting holidays and life cycle events, will reopen in the Museum in January 1999. This collection is the foundation of the Sylvia Plotkin Judaica Museum and has always enjoyed consistent attention from the community, because it so beautifully helps explain the essence of Judaism. Watch for more information in the coming weeks about the grand reopening event.



An Elijah Cup sculpted in bronze in 1982 by Ann Froman. Part of The Sylvia Plotkin Judaica Museum's permanent collection.

Temple Beth Israel
Sylvia Plotkin Judaica Museum
10460 N. 56th Street
Scottsdale, Arizona 85253

Non-profit Org.
U.S. Postage
PAID
Scottsdale, AZ
Permit No. 885



Suzanne Starr / Repi

**A Double Dedication
To A Gifted, Tireless Leader
Sylvia Plotkin
And Her Legacy — The Tunisian Synagogue
Sunday, October 18, 1998 at 2:00 P.M.
Temple Beth Israel
56th Street and Shea Boulevard
Scottsdale, Arizona**

Appreciating Our Gifts

THE DIRECTOR



Here at the Sylvia Plotkin Judaica Museum, we are busily preparing to rededicate our wonderful

"Tunisian Legacy" exhibit. Because acquisition of "Tunisian Legacy" is so intertwined with the tireless leadership of the Museum's founding director, Sylvia Plotkin, we thought it would be wonderful to dedicate our beautiful new home to Sylvia at the same time. A stunning bronze plaque bearing Mrs. Plotkin's likeness will be unveiled on Oct. 18.

When the Temple Board voted to change the name of the Museum to the Sylvia Plotkin Judaica Museum, the action was taken to honor someone whose lasting contribution to the community has educated, informed and inspired thousands of people.

A woman of formidable gifts, Sylvia had a vision for a community Jewish museum that was exceptionally progressive. Only she was able to transform this dream into reality. In our new home at Temple Beth Israel's new location, we are striving to build on the high standards that Sylvia established for innovative, meaningful exhibitions.

Sylvia's contributions to her community also will be recognized in a wonderful new exhibit at the Hall of Fame Museum in Phoenix. The exhibit, "Making A Difference: Arizona Women Building Communities, 1900-1980" will include Sylvia and will open on Oct. 15, 1998. A reception will be held from 4-7 p.m. on that date at the Hall of Fame, 1101 W. Washington. Inclusion in this exhibit is a terrific tribute to an unforgettable leader and activist.

I wish to extend a special invitation to Temple members, friends of the Sylvia Plotkin Judaica Museum and the community at large to share with us all the very special events that will take place during the weekend of Oct. 15-18.

Pamela Leuin

In 1986, longtime Temple Beth Israel member Steven Orlikoff presented the Plotkin Judaica Museum with a priceless, one-of-a-kind gift—the entire collection of artifacts from the Koskas Synagogue in Tunis. From this 19th century collection, the museum staff created an exhibition depicting a composite of many small synagogues in Tunisia.

Housed as a permanent exhibit in the David and Belle Bush Gallery at Beth Israel's former site, "Tunisian Legacy" was established in memory of Philip Chapman, the Temple's beloved religious school director who died in 1976. The exhibit was exceptionally well-received by both the Jewish and larger communities. And now it is being re-created as a permanent exhibit in the new home of the Sylvia Plotkin Judaica Museum at TBI's new site.

On Sunday, Oct. 18, 1998 a special event will be held to rededicate "Tunisian Legacy." At 3:30 p.m. in the Sanctuary, Tunisian expert, ethnologist



Tik (Sephardic Torah cover), Tunisia, 20th century

and professional photographer Keren Friedman will speak on "Jewish Culture in Tunisia" to kick off the rededication ceremony. Dressed in costume, Friedman will discuss the traditional Jewish wedding ceremony in Tunisia and will illustrate how to dye one's hands with henna, a ritual that is part of the ceremony. After her talk, a "Taste of Tunisia" reception will be held in the Museum. There is an \$18 charge for this event. **Reservations must be made by Oct. 12, 1998. Call 951-0323.**

The public is invited to attend another momentous ceremony preceding the "Tunisian Legacy" rededication. At 2 p.m. in the Goldsmith Sanctuary, the memory of Sylvia Plotkin will be honored. Mrs. Plotkin, the irreplaceable visionary who founded the museum in 1967, served as its director until her death in 1996. A bronze plaque tribute to

Mrs. Plotkin will be unveiled in the Museum. Mrs. Plotkin's daughters, Janis and Debbie—along with their father, Rabbi Albert Plotkin—will be present for the occasion. There is no charge.

It's hard to believe that 12 years have passed since Sylvia Plotkin helped bring the "Tunisian Legacy" exhibition to fruition in the Museum. In 1986, a gala opening was held to unveil this new community treasure.



Island of Djerba Jewish bride, adorned with gold jewelry and hennaed hands, prepares for traditional 14-day wedding celebration.

And now, in its new splendid location, "Tunisian Legacy" will be reborn. Complementing the exhibit will be a visiting photography exhibit from Keren Friedman, detailing Jewish Life on the island of Djerba. Djerba is situated just off the coast of Tunisia, and although it is politically part of Tunisia, it developed a unique Jewish culture dating back to 586 B.C.E. Friedman's photographs of clothing, architecture and religious symbols beautifully illustrate the Jews' uniqueness but also reveal a remarkable resemblance to their Islamic counterparts. The "Jews of Djerba" exhibit will be on display in the Sylvia Plotkin Judaica Museum beginning Oct. 18.



Memorial light, Tunisia, 20th century